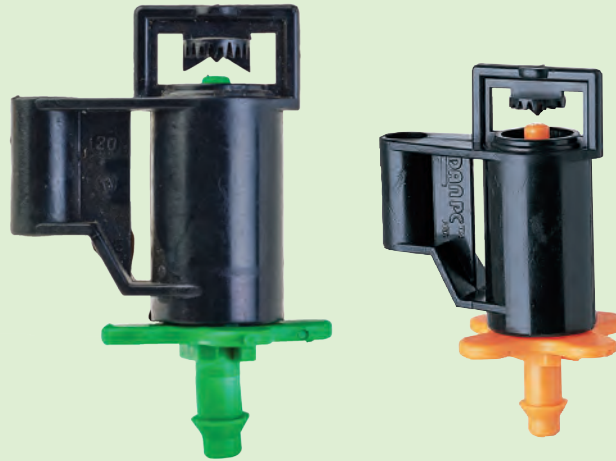


# Dan Jet PC



## Features & Benefits



### Unique Floating Diaphragm

Unique floating, self-flushing, and pressure compensating EPDM diaphragm



### Color Coded Nozzles

Size color coded nozzles for easy identification of flow rates



### Specially Designed Side Ribs

Smooth streamlined side ribs to give minimum obstruction to waterjet



### Multiple Attachment Options

Multiple attachment options like quick thread parallel & barbed for connection

# Dan Jet PC

## Additional Features

- Static, no moving parts.
- Six color coded nozzles for easy identification of flow rate.
- Option for using the sprinkler in inverted mode.
- Manufactured from the highest quality materials for long term field operations.
- Superior plug resistance due to large water passages.
- Highest uniformity for even distribution of water and fertilizers.
- Simple to repair and perform maintenance.

## Specifications

- Flow rates: 19 to 76 lph.
- Recommended working pressure: 1 to 3 kg/cm<sup>2</sup>.
- Wetted diameter: 2.4 to 5.6 m.
- Required filtration:
  - Black, Orange and Blue nozzles -130 microns (120 mesh)
  - Violet, Green and Red nozzles -200 microns (80 mesh)

## Support Stake

- The Jain Jet support stake is perfect for installation out in the field. It was designed with strength to penetrate the soil with ease.

## Technical Specification

Nozzle Color	Q (lph)	Nozzle Diameter (mm)
Black	19	0.89
Orange	28	1.17
Blue	38	1.3
Violet	47	1.55
Green	57	1.65
Red	76	1.93

Q= Discharge; D = Diameter

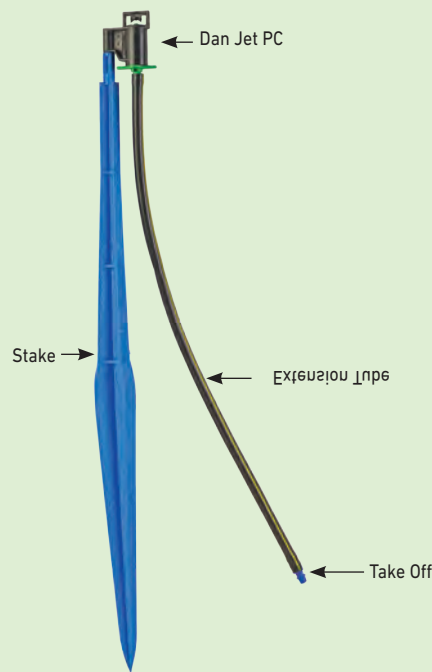
## Distribution Patterns and Diameters (m)

Tested at 2.0 kg/cm<sup>2</sup>, 0.25 m Height

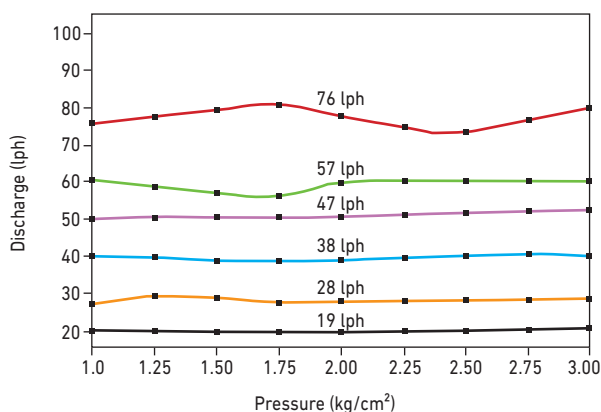
Nozzle Color	Strip	300°	12 jets	16 jets	20 jets	180° (Radius)	Inverted*	Flat (no jets)	Strip flat (no jets)
Black	2.4	3	3.2	3	2.4	1.5	2.5	2.4	2
Orange	2.6	3.2	3.6	3.2	2.8	1.7	3.3	2.6	2.2
Blue	3.2	4	4.4	4.6	3.6	2.2	3.8	3	
Violet	3.8	4.4	4.8	4.8	4	2.4	4	3.1	
Green	4.8	4.8	5	5	4.6	2.7	4.3	3.4	
Red	5	5.6	5.4	5.4	5.2	2.8	4.8	3.6	

Tested under laboratory conditions. tested at 0.6m above ground

## Dan Jet PC Assembly



## Performance Graph



## Ordering Specifications

12	XX	XX
	Degree (0)	Color of nozzle
180° - 22	Green 57 lph- 22	
300° - 29	Blue 38 lph- 23	
Strip - 27	Violet 47 lph - 24	
12 Jets - 26	Orange 28 lph - 25	
16 Jets - 24	Black 76 lph - 27	
	Black 19 lph - 28	