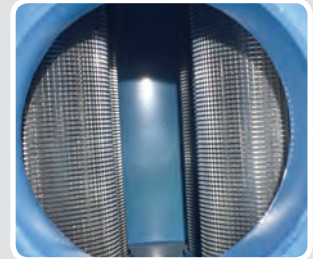


# SmartClean JUMBO Filter



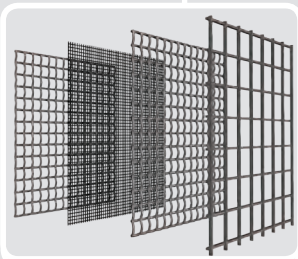
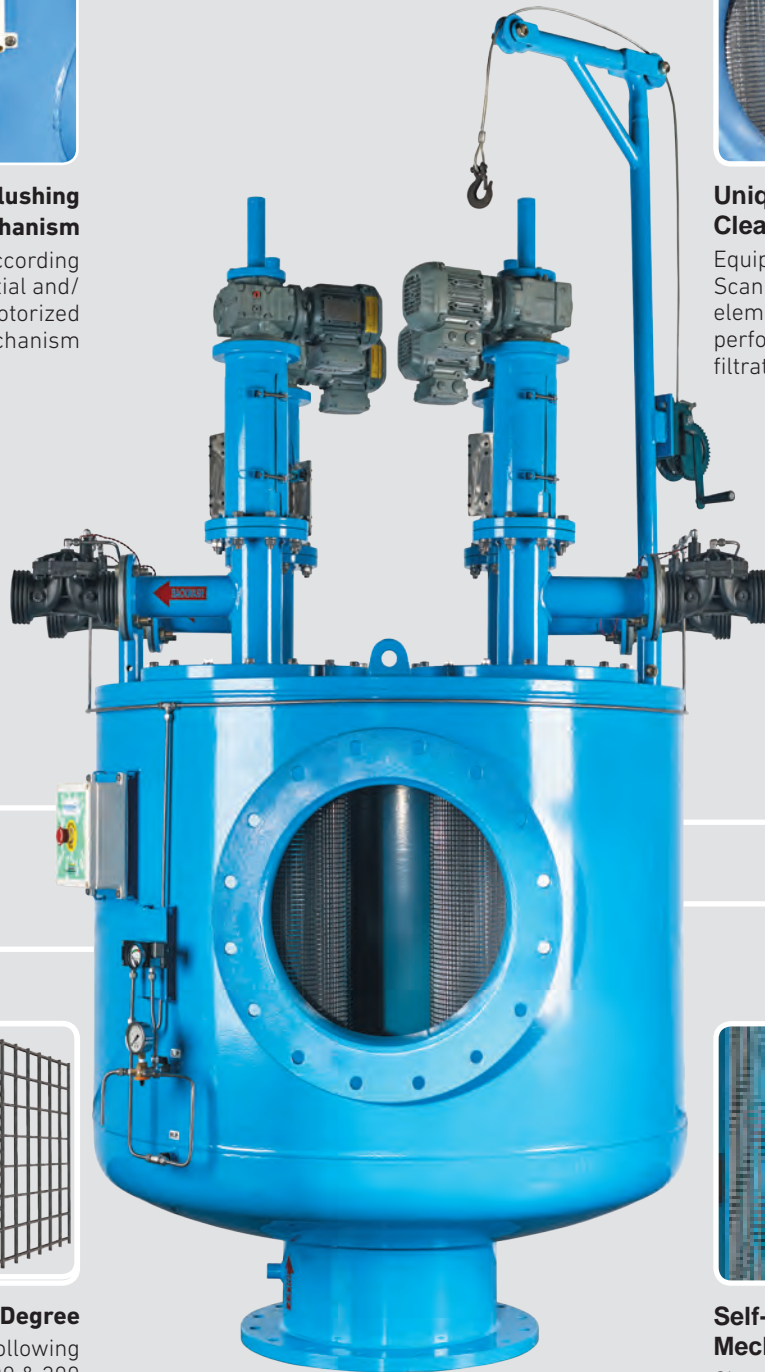
### Automatic Flushing Mechanism

Automatic flushing according to pressure differential and/or time with motorized mechanism



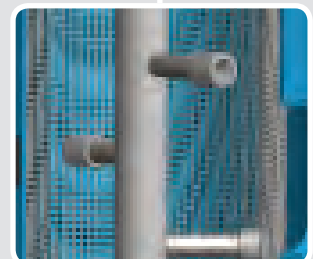
### Unique Multiple Smart Clean Element

Equipped with multiple Smart-Scan element, Unique filtering element, to assure high performance and effective filtration



### Choice of Filtration Degree

Filtration available with following degree as 80, 100, 125, 200 & 300 micron



### Self-Suction Cleaning Mechanism

Cleaning of the filter is carried out by the suction smart scanner which rotates spirally across the screen

**SmartClean**   
Automatic Screen Filter

# SmartClean JUMBO Filter

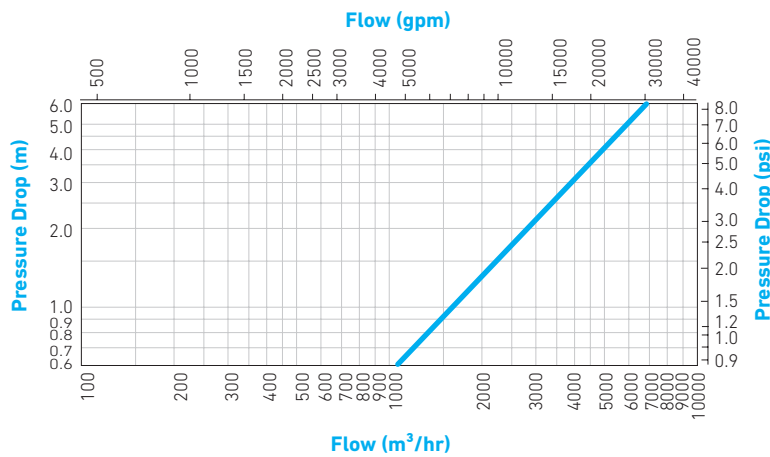
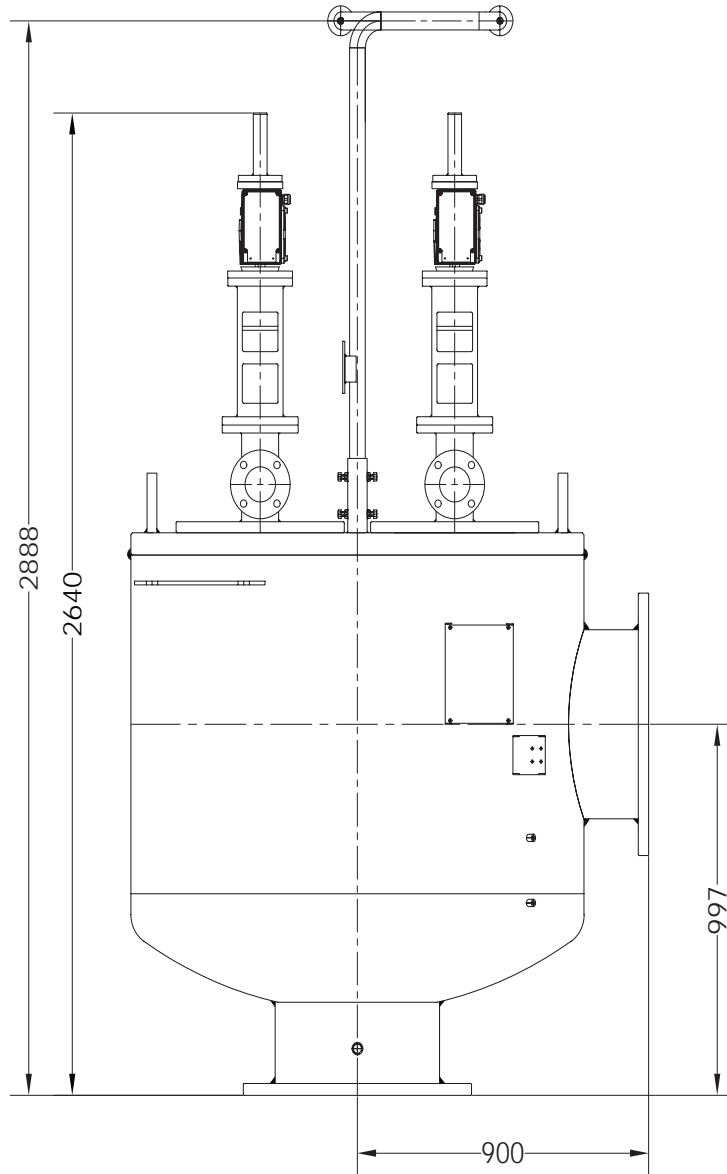


## Specifications

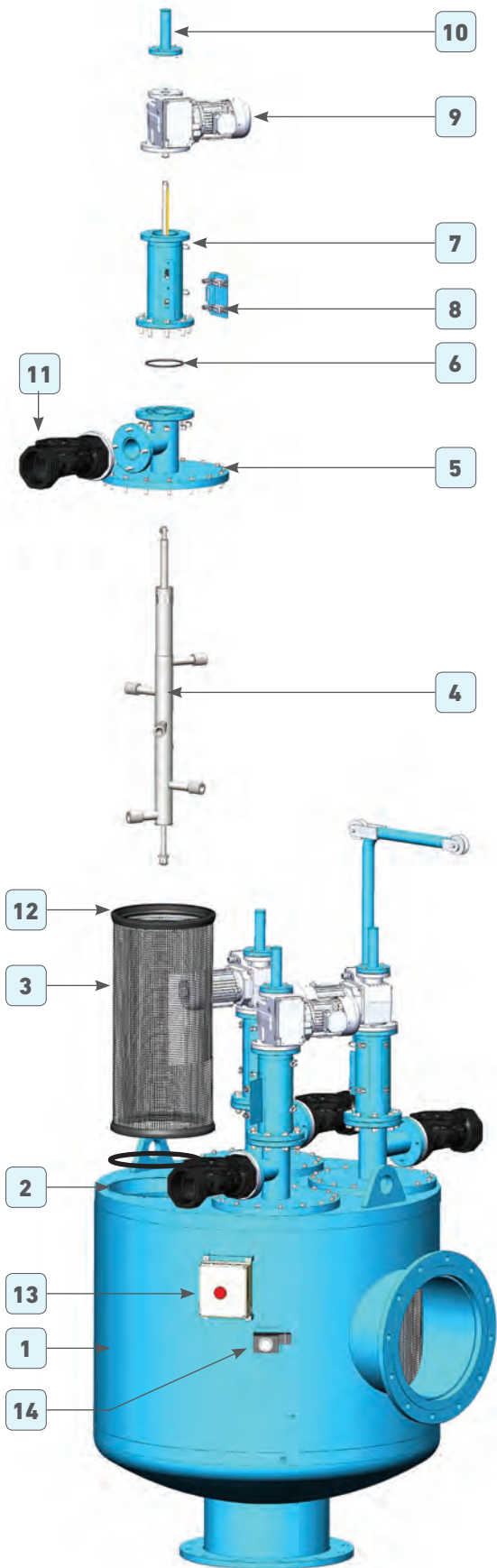
Model	Type	200S
Inlet /outlet connection (inch)	inch	20"
Filtration area	(cm <sup>2</sup> )	11000 x 4
	(inch <sup>2</sup> )	1705 x 4
Nominal Flowrate	m <sup>3</sup> /hr	4000
	US gpm	17600
Filtration Degree	micron	80, 100, 125, 200, 300
Minimum Working Pressure	bar	2
	psi	28
Maximum Working Pressure	bar	10
	psi	142
Maximum Working Temperature	Deg C	60
	Deg F	140
Gross Weight	Kg	2811.00
	lbs	6184.20
Screen Type	Multilayer dutch weave screen	
Drain Connection Size	inch	3"
Minimum Flow for Flushing (at 2 bar - 29 psi)	m <sup>3</sup> /hr	50 x 4
	US gpm	220 x 4
Volume of Flush Water (at 2 bar - 29 psi)	liter	555 x 4
	gallon	147 x 4
Duration of Flushing	sec	40 x 4
Flushing Condition	Automatic based on differential pressure of 0.6 bar (8.5 psi) and /or time based	
<b>Filter construction materials</b>		
Filter housing	Epoxy coated carbon steel ASTM - A53 / A106 (Stainless steel 316L on request)	
Filter Lid	Epoxy coated carbon steel ASTM - A53 / A106 (Stainless steel 316L on request)	
Housing seal	EPDM & NBR	
Cleaning Mechanism	Collecting Shaft: Stainless Steel 316L; Nozzle: Nylon	
Filter Element	Stainless Steel 316L	
Drain Valve	PP	

# SmartClean JUMBO Filter

20" JUMBO FILTER ASSEMBLY



# SmartClean JUMBO Filter



Sr.	Description	200C
1	Filter Body	JSSEO4000B
2	Filter Body "O" Ring	EPDMORINGID439CS8
3	Multilayer Screen Element	JSCVEOSCRSS316EA
4	Dirt Collecting Shaft Assembly	JSCVEOSS11CSA
5	Filter Top Cover	JSSEO4000LC
6	"O" Ring for EO assembly	EPDMORINGID142CS7
7	Drive Shaft Case Assembly	JSCVEODRIVEHA
8	Limit Switch Assembly	JSCVEOLIMITSPA
9	Electric Motor	GMSAF47DRS71S4FT
10	Filter Protection Cover	PROCO
11	Hydraulic Drain Valve	HVP3A
12	Element "O" Ring	SCSRINGID363CS417
13	Sub Controller	JSCVEOEMSWBA
14	Different Press Switch	PDSWDGC320GS