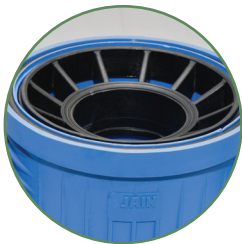


JAIN HYDRAULIC VALVE

~ Thy name is Precision!



Features & Benefits



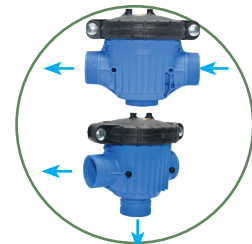
Low pressure drop

Unique design offers low pressure drop and longer life



Top opening for easy maintenance

Easy opening with only two bolts allows easy maintenance even in constricted installations & inside the valve box without removing out the valve



Model - Straight flow and Angle flow

Two types outlet options facilitates installation in angular or straight fashion depending on field requirements



Flexible yet Strong Rubber Diaphragm

Nylon reinforced heavy duty rubber diaphragm provides high flexural strength.



Strong and Robust

Virgin plastic material & innovative design makes valve strong & robust to withstand pressure stresses impact & heat resistance.



Compatible with Different Pilots

Jain Hydraulic Valve is compatible with different add-on regulatory pilot options like Solenoid (AC / DC), Pressure Reducing, Pressure relief, Pressure Sustaining, Flow Control, Level Control etc..



JAIN HYDRAULIC VALVE
अचूकता मेरी पहचान!

Jain Valves
The Ultimate Flow Controller

JAIN HYDRAULIC VALVE - Thy name is Precision!

Precision in irrigation solely depends on performance of each component used with it. Jain Hydraulic Valve offers following advantages:

- It is a hydraulically operated, diaphragm actuated control valve which opens and turns off in response to either an electric signal or regulates / controls pressure by using hydraulic pilots.
- It controls and regulate flow and pressure precisely.
- Jain Hydraulic valve is designed to open at lower pressure with smooth operation
- It has low pressure drop with respect to flow.

Applications

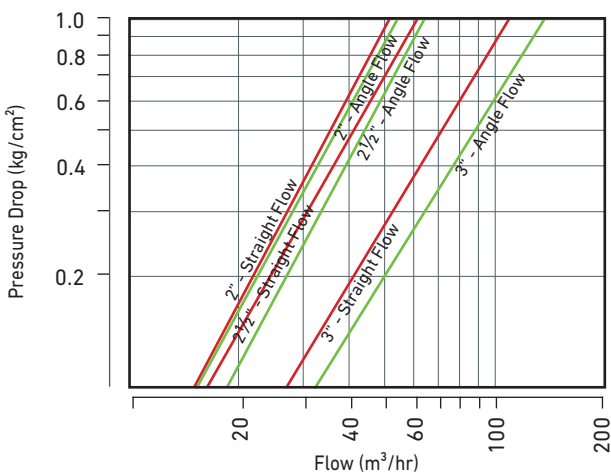
For Agriculture, Turf, Aquaculture and Reclaimed Water service

Specifications

- Sizes: 50 mm, 65 mm & 80 mm (2", 2½" & 3")
- Maximum working pressure is 10 kg/cm²
- Available in Black, Blue, & Grey Colour Options with plastic Clamp OR Stainless Steel Clamp
- BSP / NPT male threaded connection, Easy Fix connection and Flanged connection available
- Maximum working temperature 60 °C

Dimensions

Pressure Drop w.r.t. Flow Chart



Straight Flow

Angle Flow

Connection Size	VCDV	A	B	C	D	E
	lit	mm	mm	mm	mm	mm
2" - Straight	0.220	264	211	250	25.7	82
2½" - Straight	0.220	264	211	250	30.2	82
3" - Straight	0.440	290	233	290	33.3	93
2" - Angle	0.220	264	245	215	25.7	113
2½" - Angle	0.220	264	245	220	30.2	115
3" - Angle	0.440	290	271	262	33.3	131

VCDV = Valve Chamber Displacement Volume in litre

Flow Properties - Kv values

Valve Size	50 (2")	65(2-1/2")	80 (3")
Straight	52	58	100
Angle	54	62	118

$Q = K_v \cdot \sqrt{\Delta P}$ Where Q = Flow rate m³/hr, ΔP = Differential Pressure kg/cm² & K_v = Valve Coefficient



JAIN HYDRAULIC VALVE

अचूकता मेरी पहचान!



Tel: +91-257-2258011; Fax: +91-257-2258111; E-mail: jisl@jains.com; Website: www.jains.com;

Toll Free: 1800 599 5000

