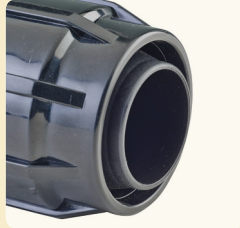


Rainport® Fittings

Features & Benefits

Additional barbs provided

Additional barbs provided to prevent snap out of tube



Innovative Cap for holding

Special cap provided to hold tube from outer side.



Additional Features

- Manufactured from tough engineering plastic
- Non corrosive & resistant to chemicals
- UV resistant fittings

Applications

Feasible for thick wall thickness Polytubes (plain Lateral / Jain Tough Hose) as well as Dripline tubes for following specifications:

Nominal Diameter (mm)	Inner Diameter (mm)	Wall thickness (mm)
25	22.6	1.2 - 2.1
32	29.0	1.5 - 2.5

Rainport® Joiner



Size (mm)	Code	Bag	Box		
		Qty. (nos.)	Qty. (nos.)	Wt. (kg)	Code
25 OD CL 1	RPJ25CL1	N.A.	500	20.2	B
25 OD CL 2	RPJ25	N.A.	500	20.2	B
32 OD CL 1	RPJ32CL1	N.A.	300	21.2	B
32 OD CL 2	RPJ32	N.A.	300	21.2	B

Rainport® Male Threaded Adaptor



Size (mm x inch)	Code	Bag	Box		
		Qty. (nos.)	Qty. (nos.)	Wt. (kg)	Code
25 OD CL 1 x 3/4"	RPMTA-2534CL1	N.A.	800	25.5	B
25 OD CL 2 x 3/4"	RPMTA2534	N.A.	800	25.5	B
32 OD CL 1 x 1"	RPMTA-3201CL1	N.A.	400	19.0	B
32 OD CL 2 x 1"	RPMTA3201	N.A.	400	19.0	B

Note : Can also be supplied with 32 mm x 1 1/4" & 25mm X 1" adaptor

Rainport® End Cap



Size (mm)	Code	Bag	Box		
		Qty. (nos.)	Qty. (nos.)	Wt. (kg)	Code
25 OD CL 1	RPEC25CL1	N.A.	1000	22.5	B
25 OD CL 2	RPEC25	N.A.	1000	22.5	B
32 OD CL 1	RPEC32CL1	N.A.	500	20.4	B
32 OD CL 2	RPEC32	N.A.	500	20.4	B

Rainport® Elbow



Size (mm)	Code	Bag	Box		
		Qty. (nos.)	Qty. (nos.)	Wt. (kg)	Code
25 OD CL 1	RPE25CL1	N.A.	400	15.4	B
25 OD CL 2	RPE25	N.A.	400	15.4	B
32 OD CL 1	RPE32CL1	N.A.	200	9.0	B
32 OD CL 2	RPE32	N.A.	200	9.0	B

Note: Class 1 tube fittings are with Green colour cap and Class 2 tube fittings are with Black colour cap.

Rainport® Fittings

Rainport® Male Threaded Elbow



Size (mmxinch)	Code	Bag	Box		
		Qty. (nos.)	Qty. (nos.)	Wt. (kg)	Code
25 OD CL1 x 3/4"	RPMTE-2534CL1	N.A.	600	17.0	B
25 OD CL2x 3/4"	RPMTE2534	N.A.	600	17.0	B
32 OD CL1 x 1"	RPMTE-3201CL1	N.A.	300	16.1	B
32 OD CL2 x 1"	RPMTE3201	N.A.	300	16.1	B

Note : Can also be supplied with 32 mm x 1 1/4" size

Rainport® Female Threaded Adaptor



Size (mm x inch)	Code	Bag	Box		
		Qty. (nos.)	Qty. (nos.)	Wt. (kg)	Code
25 OD CL1 x 3/4"	RPFTA-2534CL1	N.A.	700	24.0	B
25 OD CL2x 3/4"	RPFTA2534	N.A.	700	24.0	B
32 OD CL1 x 1"	RPFTA-3201CL1	N.A.	350	17.0	B
32 OD CL2 x 1"	RPFTA3201	N.A.	350	17.0	B

Note : Can also be supplied with 32 mm x 1 1/4" size

Rainport® Tee



Size (mm)	Code	Bag	Box		
		Qty. (nos.)	Qty. (nos.)	Wt. (kg)	Code
25 OD CL 1	RPT25CL1	N.A.	250	16.0	B
25 OD CL 2	RPT25	N.A.	250	16.0	B
32 OD CL 1	RPT32CL1	N.A.	150	9.0	B
32 OD CL 2	RPT32	N.A.	150	9.0	B

Jain Ball Valve- SU Rainport connection



Size (mm)	Code	Bag	Box		
		Qty. (nos.)	Qty. (nos.)	Wt. (kg)	Code
25 OD CL 1	SUV25FRPCL1	N.A.	120	20.6	B
25 OD CL 2	SUV25FRP	N.A.	120	20.6	B
32 OD CL 1	SUV32FRPCL1	N.A.	80	19.8	B
32 OD CL 2	SUV32FRP	N.A.	80	19.8	B

Rainport® Female Threaded Elbow



Size (mmxinch)	Code	Bag	Box		
		Qty. (nos.)	Qty. (nos.)	Wt. (kg)	Code
25 OD CL1 x 3/4"	RPFTE2534CL1	N.A.	500	15.8	B
25 OD CL2x 3/4"	RPFTE2534	N.A.	500	15.8	B
32 OD CL1 x 1"	RPFTE3201CL1	N.A.	250	14.3	B
32 OD CL2 x 1"	RPFTE3201	N.A.	250	14.3	B

Rainport® x Male Threaded Tee



Size (mmxinch)	Code	Bag	Box		
		Qty. (nos.)	Qty. (nos.)	Wt. (kg)	Code
25 OD CL1x 3/4"	RPMTT2534CL1	N.A.	300	15.1	B
25 OD CL2x 3/4"	RPMTT2534	N.A.	300	15.1	B
32 OD CL1 x 1"	RPMTT3201CL1	N.A.	150	10.1	B
32 OD CL2 x 1"	RPMTT3201	N.A.	150	10.1	B

Note: Class 1 tube fittings are with Green colour cap and Class 2 tube fittings are with Black colour cap.